

Price includes standard floorplan with S1 facade.



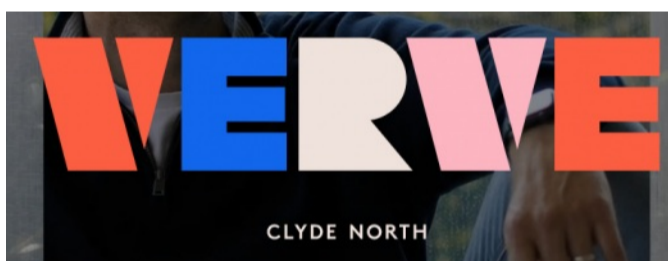
Furniture, feature lighting, landscaping, driveway, window furnishings, and porch decking not provided by Eight Homes.

FIRST HOME BUYERS PRICE \$584,310 ^

**FIXED PRICE
HOUSE & LAND**

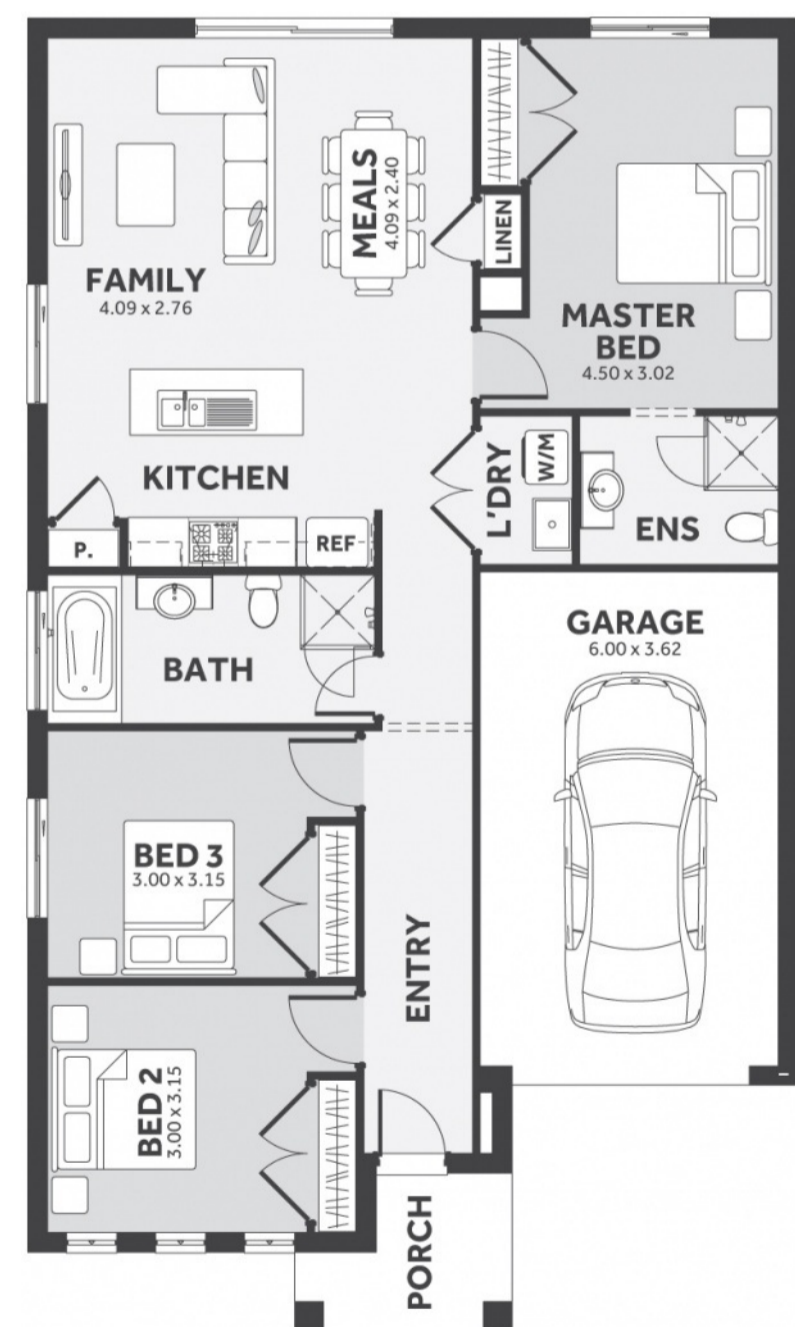
Sejero 1-14

Lot 359, Tribute Avenue Clyde North 3987
LAND SIZE: 262.00m²



135.54m² | 14.59 sqs

- ✓ Council and Developer Requirements
- ✓ 25 Year Structural Guarantee
- ✓ \$888 Initial Deposit for the home only
- ✓ Quantum Zero Benchtop & Overhead Cupboards to Kitchen
- ✓ 900mm Appliances & Dishwasher to Kitchen
- ✓ Tiled Shower Bases
- ✓ Choice of Tiles or Timber-look Laminate Flooring
- ✓ Double Glazed Windows ‡



Please Contact
Paul Basol
0475 987 040
paul.basol@8homes.com.au

We make it easy!