

Price includes standard floorplan with S1 facade.



Furniture, feature lighting, landscaping, driveway, window furnishings, and porch decking not provided by Eight Homes.

**FIRST HOME BUYERS PRICE \$566,202 ^**

**FIXED PRICE  
HOUSE & LAND**

**S.SIX.3**

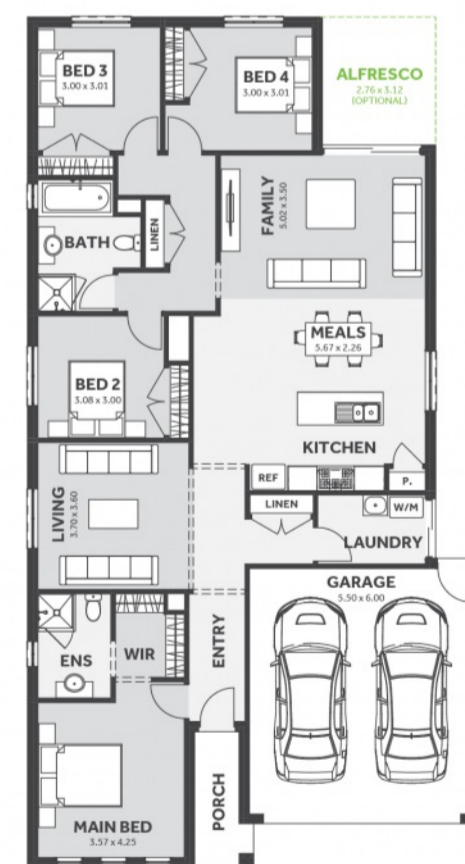
Lot 117, Balmore Street Beveridge  
LAND SIZE: 393.00m<sup>2</sup>



4 2.0 2

200.75m<sup>2</sup> | 21.61 sqs

- ✓ Council and Developer Requirements
- ✓ 25 Year Structural Guarantee
- ✓ \$888 Deposit
- ✓ Stone bench tops & overhead cupboards to the kitchen
- ✓ 900mm appliances & dishwasher to the kitchen
- ✓ Tiled Shower Bases
- ✓ Choice of tiles or timber look laminate flooring
- ✓ Driveway & Garage door remotes
- ✓ Double glazed windows



Please Contact  
Kathy Salva  
0417 571 005  
kathys@8homes.com.au

*We make it easy!*

