

# d FOUR

**40.77** m+  
lot width

width **14 m+** | depth **28 m+**



**Exterior Width: 11850 mm**

**Exterior Length: 20910 mm**

## Dimensions

|                   |                       |           |
|-------------------|-----------------------|-----------|
| Living            | 321.20 m <sup>2</sup> | 34.58 sqs |
| Garage            | 37.22 m <sup>2</sup>  | 4.01 sqs  |
| Portch            | 5.87 m <sup>2</sup>   | 0.63 sqs  |
| Alfresco          | 14.44 m <sup>2</sup>  | 1.55 sqs  |
| Balcony           | 0.00 m <sup>2</sup>   | 0.00 sqs  |
| Optional Alfresco | 0.00 m <sup>2</sup>   | 0.00 sqs  |

**Total 378.75m<sup>2</sup> | 40.77 sqs**

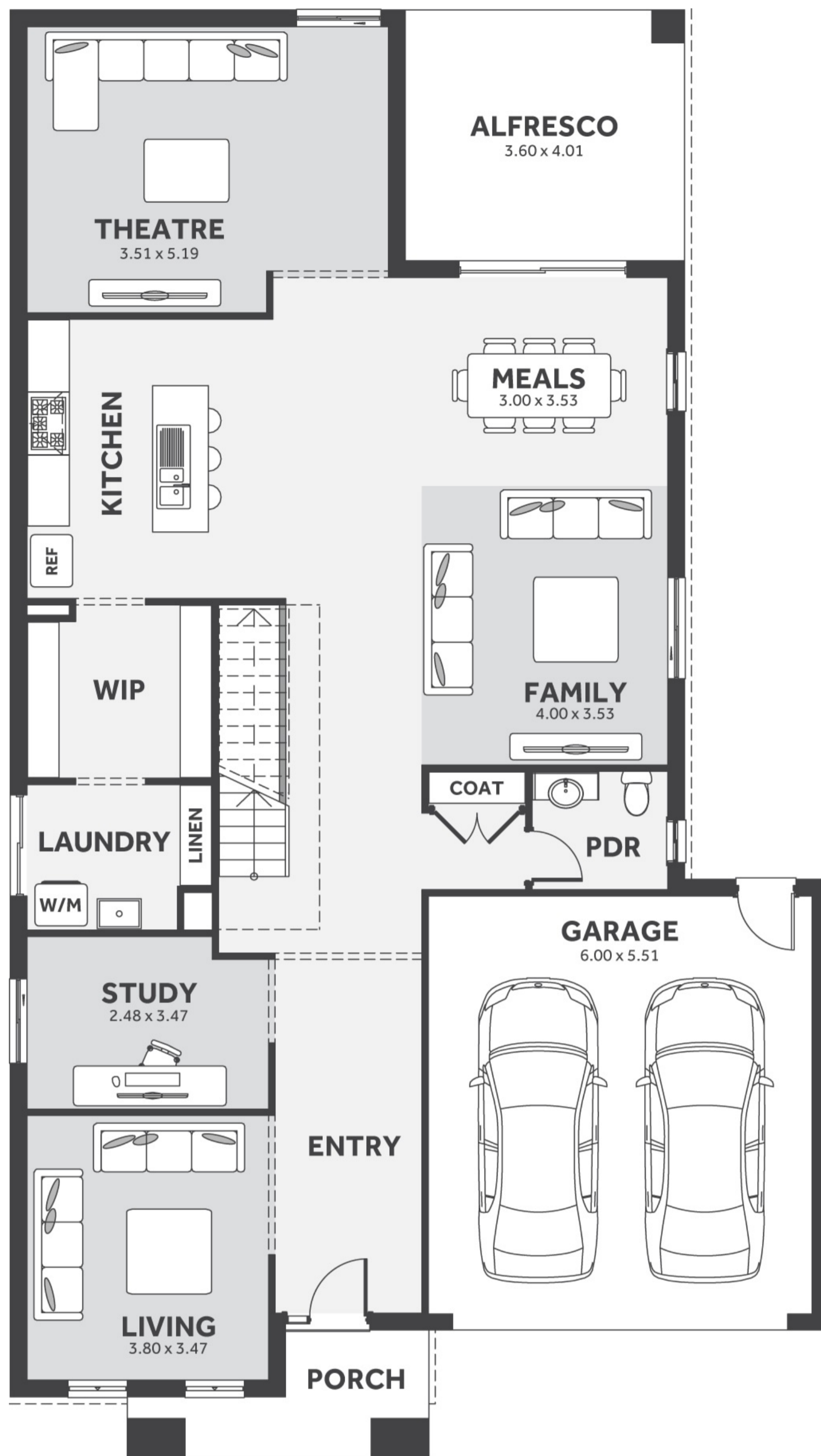
Floorplan images and measurements are to be used as a guide only. Please refer to specific working drawings for details.

For more information please visit:

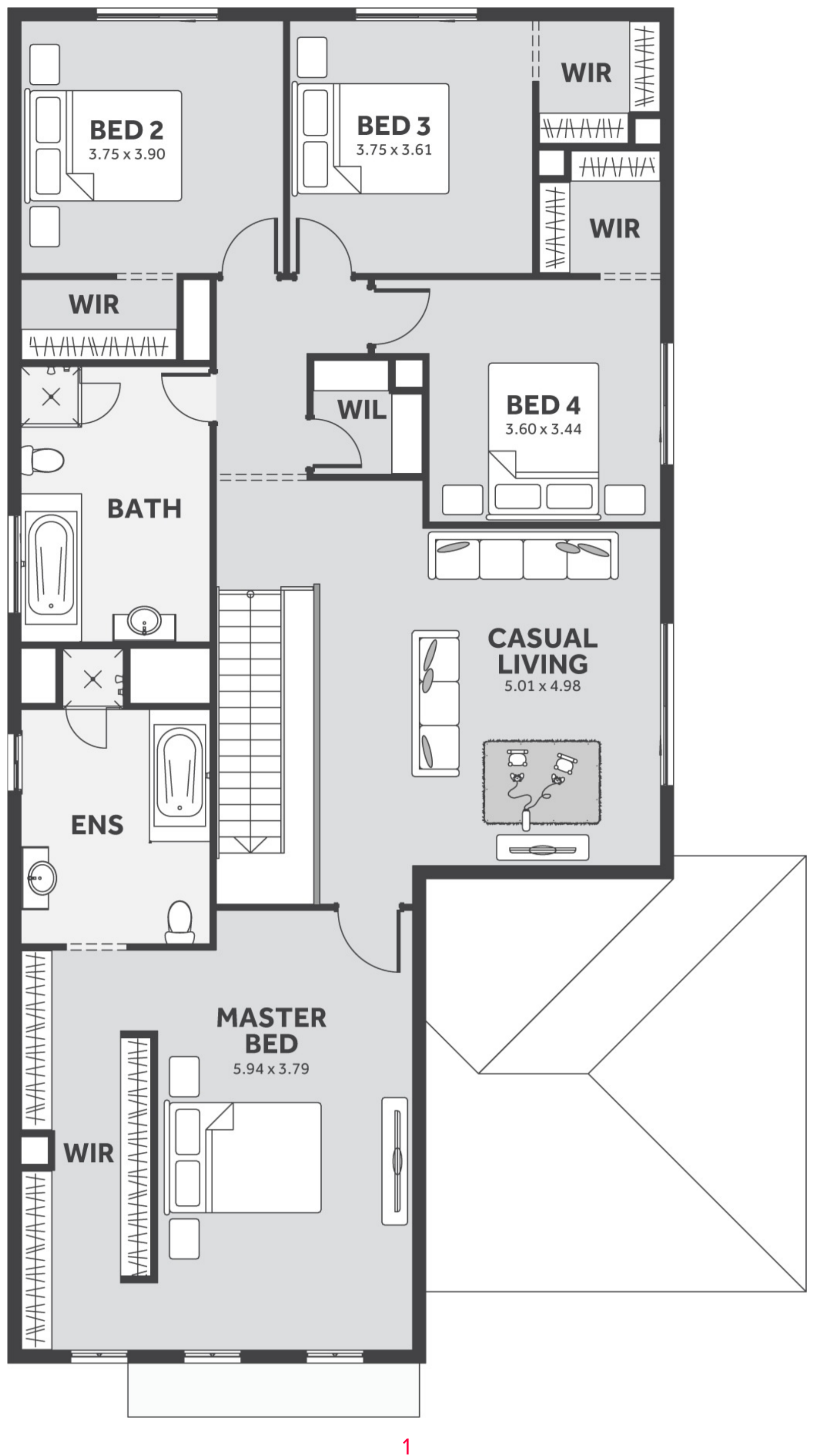
[www.houseandlandworld.com](http://www.houseandlandworld.com)

or call:

**1300 HL WORLD**



0



1