

Price includes standard floorplan with S1 facade.



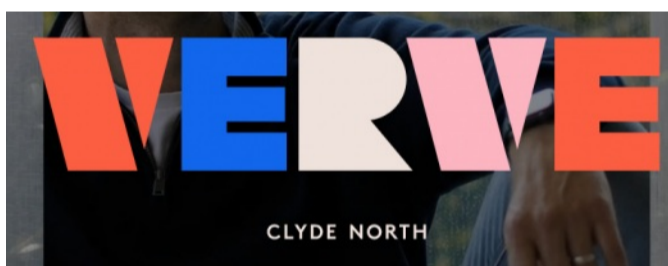
Furniture, feature lighting, landscaping, driveway, window furnishings, and porch decking not provided by Eight Homes.

FIRST HOME BUYERS PRICE \$887,115 ^

**FIXED PRICE
HOUSE & LAND**

d Seven.2

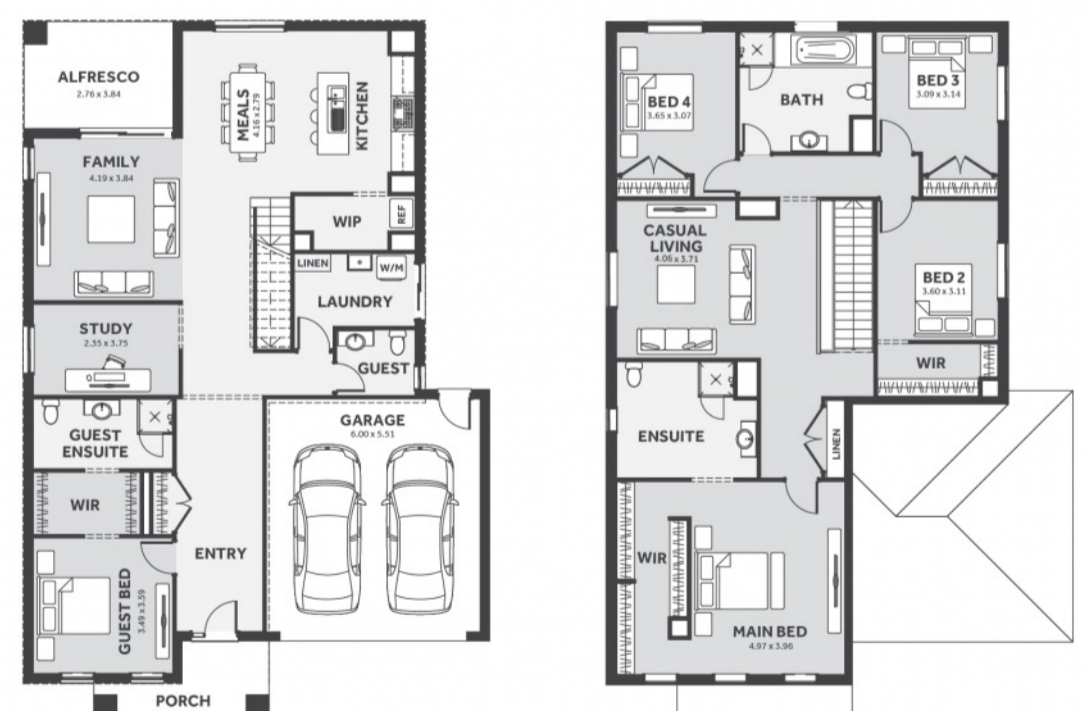
Lot 215, Voyager Place
LAND SIZE: 392.00m²



5 3.0 2

327.56m² | 35.26 sqs

- ✓ Council and Developer Requirements
- ✓ 25 Year Structural Guarantee
- ✓ \$888 Deposit
- ✓ Stone bench tops & overhead cupboards to the kitchen
- ✓ 900mm appliances & dishwasher to the kitchen
- ✓ Tiled Shower Bases
- ✓ Choice of tiles or timber look laminate flooring
- ✓ Driveway & Garage door remotes
- ✓ Double glazed windows



Please Contact
Tania Shaw
0430 927 258
tania.shaw@8homes.com.au

We make it easy!

