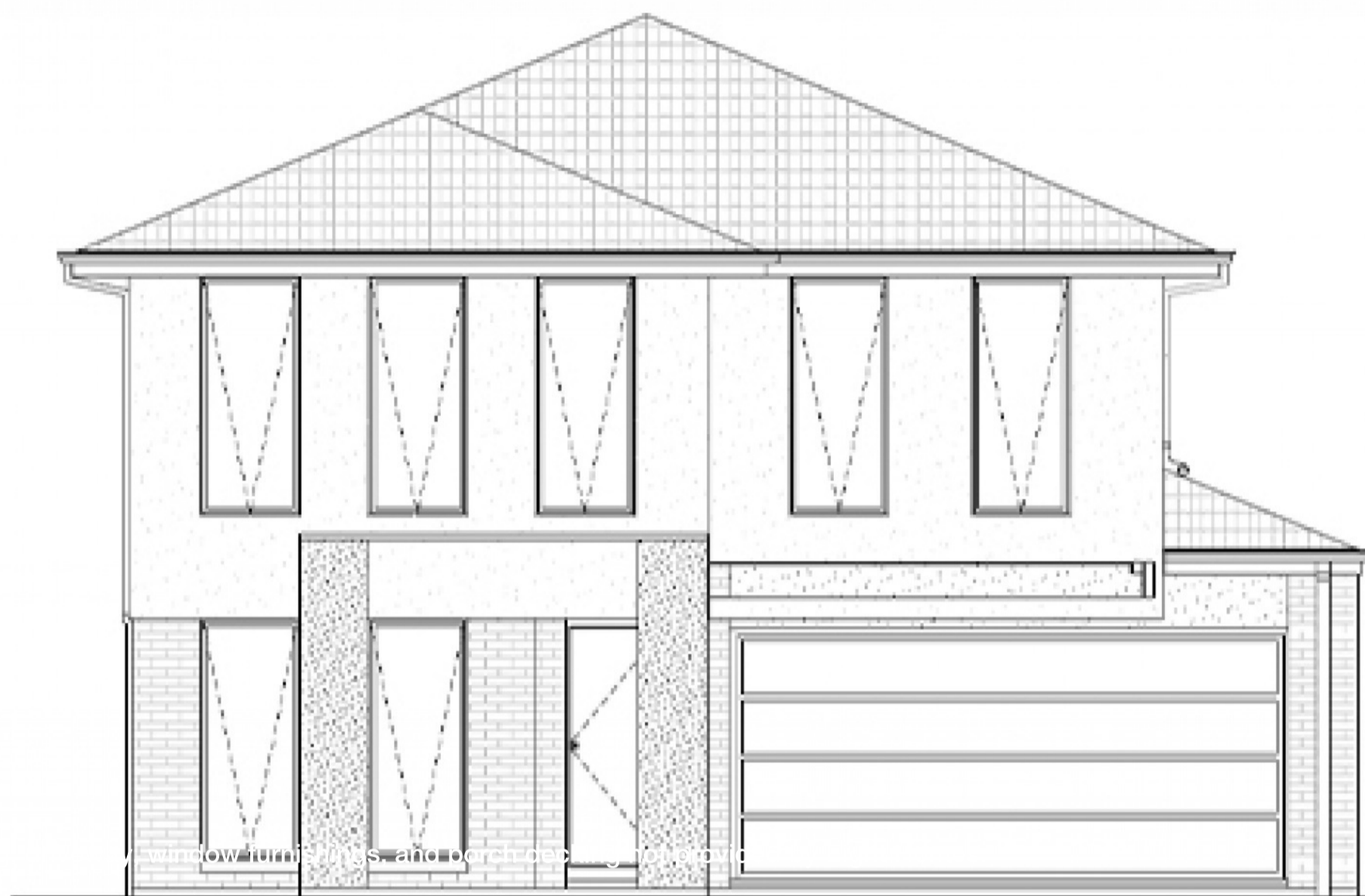


Price includes standard floorplan with S1 facade.



FIRST HOME BUYERS PRICE \$762,863 ^

**FIXED PRICE
HOUSE & LAND**

Jardene 2-30

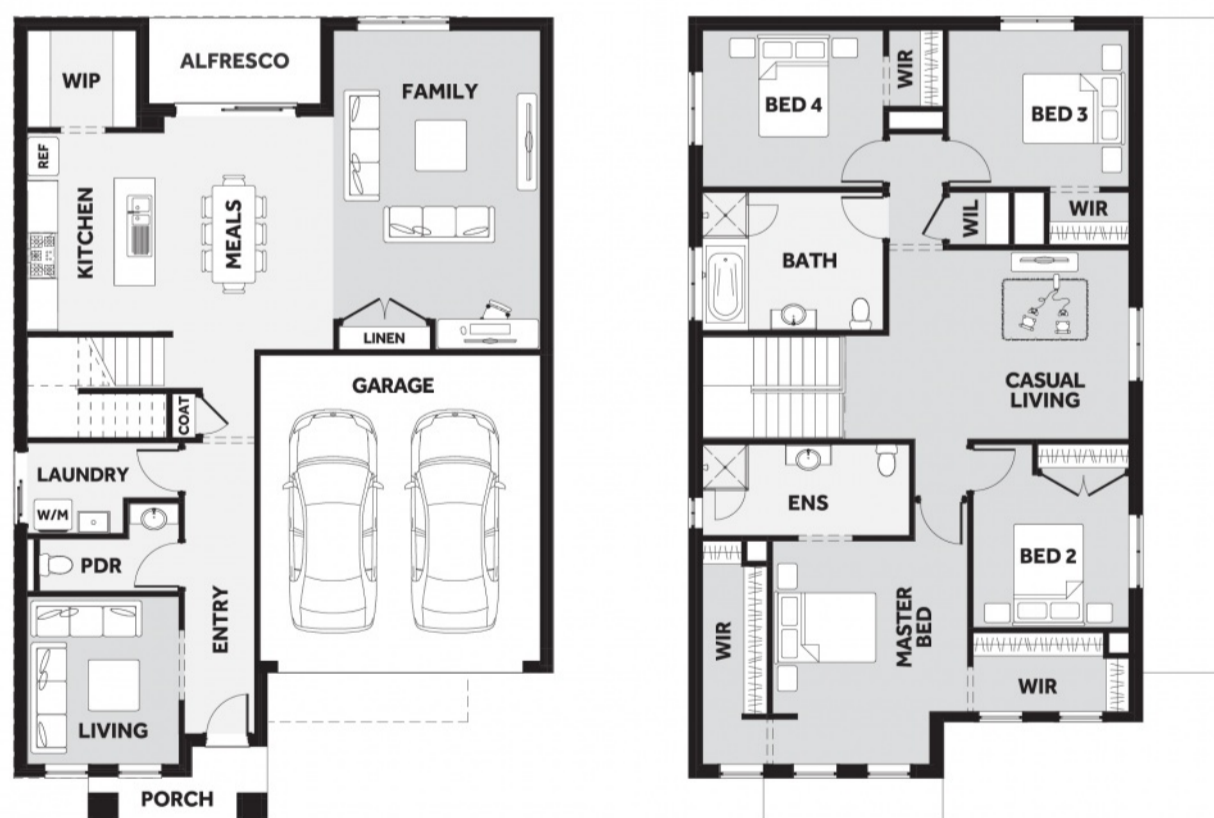
Lot 3107, Prevelli Way
LAND SIZE: 313.00m²

RATHDOWNE
WOLLERT



277.12m² | 29.83 sqs

- ✓ Council and Developer Requirements
- ✓ 25 Year Structural Guarantee
- ✓ \$888 Initial Deposit for the home only
- ✓ Quantum Zero Benchtop & Overhead Cupboards to Kitchen
- ✓ 900mm Appliances & Dishwasher to Kitchen
- ✓ Tiled Shower Bases
- ✓ Choice of Tiles or Timber-look Laminate Flooring
- ✓ Double Glazed Windows ‡



Please Contact
Eva Abenir
0433 574 468
Evaa@8homes.com.au

We make it easy!