

Price includes standard floorplan with S1 facade.



Furniture, feature lighting, landscaping, driveway, window furnishings, and porch decking not provided by Eight Homes.

**FIRST HOME BUYERS PRICE \$818,418 ^**

**FIXED PRICE  
HOUSE & LAND**

**d THREE.1**

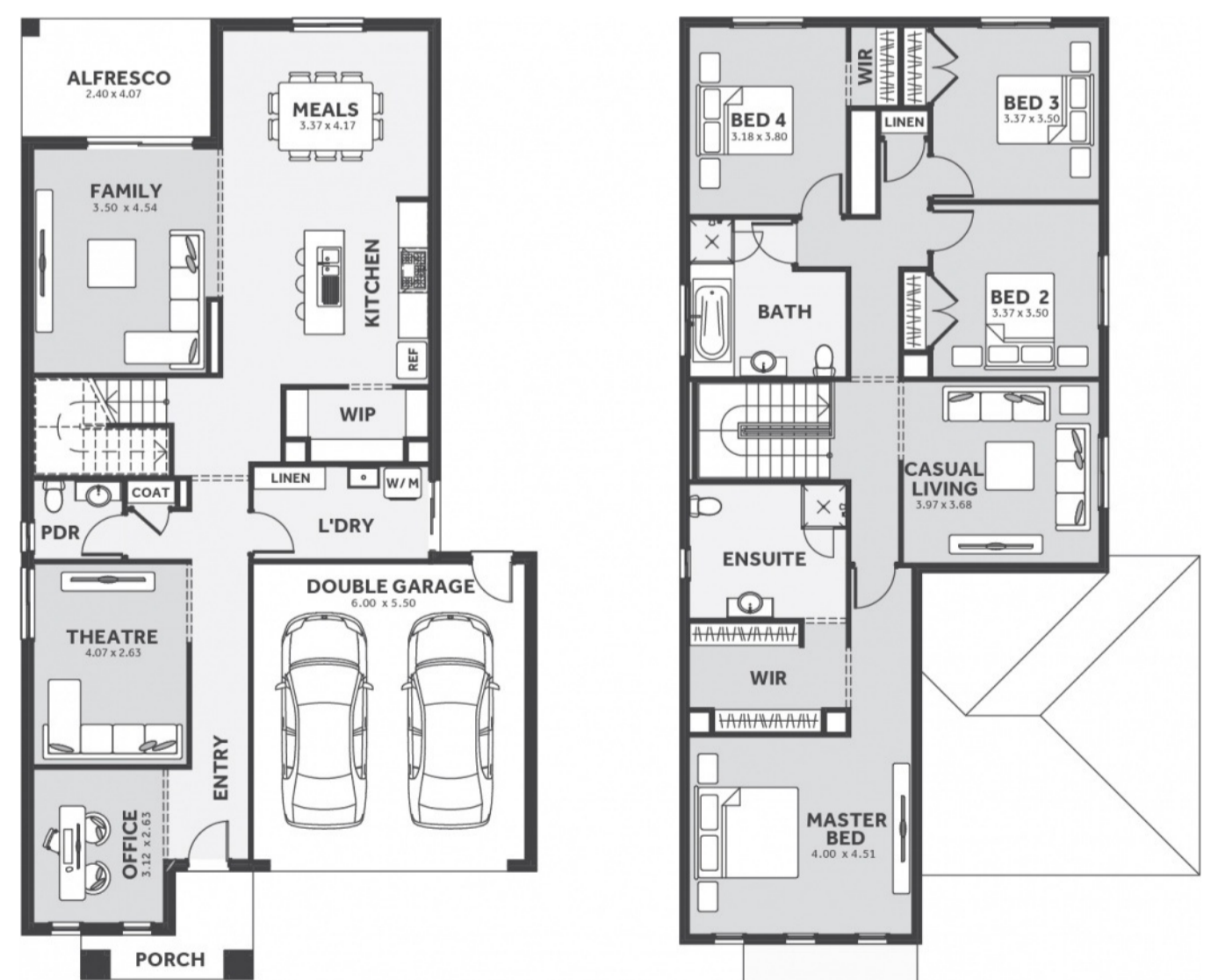
Lot 608, Cores Place  
LAND SIZE: 401.00m<sup>2</sup>

**Wollert.**  
*Rise*

4 2.5 2

**302.57m<sup>2</sup> | 32.57 sqs**

- ✓ Council and Developer Requirements
- ✓ 25 Year Structural Guarantee
- ✓ \$888 Initial Deposit for the home only
- ✓ Quantum Zero Benchtop & Overhead Cupboards to Kitchen
- ✓ 900mm Appliances & Dishwasher to Kitchen
- ✓ Tiled Shower Bases
- ✓ Choice of Tiles or Timber-look Laminate Flooring
- ✓ Double Glazed Windows ‡



Please Contact  
Eva Abenir  
0433 574 468  
Evaa@8homes.com.au

*We make it easy!*

\*Price is based on the standard floorplan and facade. Eight homes reserve the right to change prices/promotions without notification. Subject to developer's design review panel final approval. Package price is based on builder's preferred siting. Images are for illustrative purposes and are to be used as a guide only. Eight Homes does not provide furniture décor, landscaping and decking. Please refer to the house and land inclusions and house specific working drawings for all details. †Double glazed windows apply to standard Eight Homes floorplans and facades. Changes/upgrades to floorplan, facade or windows (including size changes, additional windows) may incur an additional cost. This is not applicable to any internal & external doors or timber windows. ‡Available to first home buyers eligible for the state government First Home Owners Grant. For details visit [www.sro.vic.gov.au](http://www.sro.vic.gov.au) Eight Homes DBU 1994