

Price includes standard floorplan with S1 facade.



Furniture, feature lighting, landscaping, driveway, window furnishings, and porch decking not provided by Eight Homes.

FIRST HOME BUYERS PRICE \$668,183 ^

**FIXED PRICE
HOUSE & LAND**

S.SIX.3

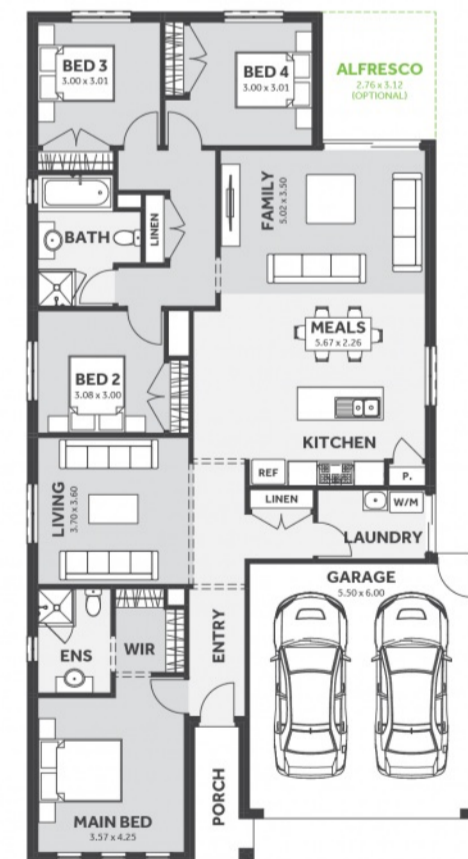
Lot 1320, Heifer Road
LAND SIZE: 350.00m²

SMITHSPARK

4 bedrooms, 2.0 bathrooms, 2 car spaces

200.75m² | 21.61 sqs

- ✓ Council and Developer Requirements
- ✓ 25 Year Structural Guarantee
- ✓ \$888 Deposit
- ✓ Stone bench tops & overhead cupboards to the kitchen
- ✓ 900mm appliances & dishwasher to the kitchen
- ✓ Tiled Shower Bases
- ✓ Choice of tiles or timber look laminate flooring
- ✓ Driveway & Garage door remotes
- ✓ Double glazed windows



Please Contact
Chloe Amolo
0425 809 385
chloea@8homes.com.au

We make it easy!

