

Price includes standard floorplan with S1 facade.



Furniture, feature lighting, landscaping, driveway, window furnishings, and porch decking not provided by Eight Homes.

FIRST HOME BUYERS PRICE \$644,320 ^

**FIXED PRICE
HOUSE & LAND**

S FOUR

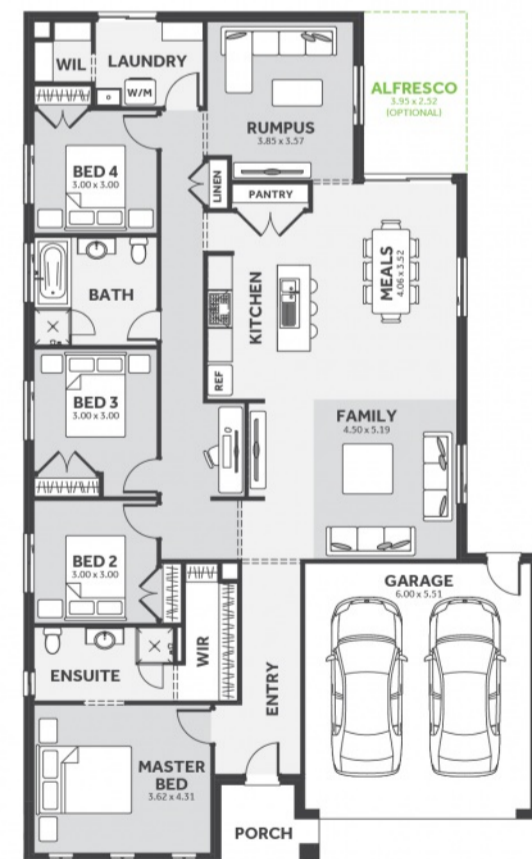
Lot 1809, Councillor Drive
LAND SIZE: 406.00m²

**SEVENTH
BEND**

4 2.0 2

221.65m² | 23.86 sqs

- ✓ Council and Developer Requirements
- ✓ 25 Year Structural Guarantee
- ✓ \$888 Deposit
- ✓ Stone bench tops & overhead cupboards to the kitchen
- ✓ 900mm appliances & dishwasher to the kitchen
- ✓ Tiled Shower Bases
- ✓ Choice of tiles or timber look laminate flooring
- ✓ Driveway & Garage door remotes
- ✓ Double glazed windows



Please Contact
Shannon Minett
0451 120 075
shannonm@8homes.com.au

We make it easy!

*Price is based on the standard floorplan and facade. Eight Homes reserves the right to change prices/promotions without notification. Subject to developer's design review panel final approval. Package price is based on builder's preferred siting. Images are for illustrative purposes and are to be used as a guide only. Eight Homes does not provide furniture, décor, landscaping & decking. Please refer to house & land inclusions and house specific working drawings for all details. ^Available to first home buyers eligible for the state government First Home Owners Grant. For details visit www.sro.vic.gov.au. Mahercorp Pty Ltd. DBU 1994

