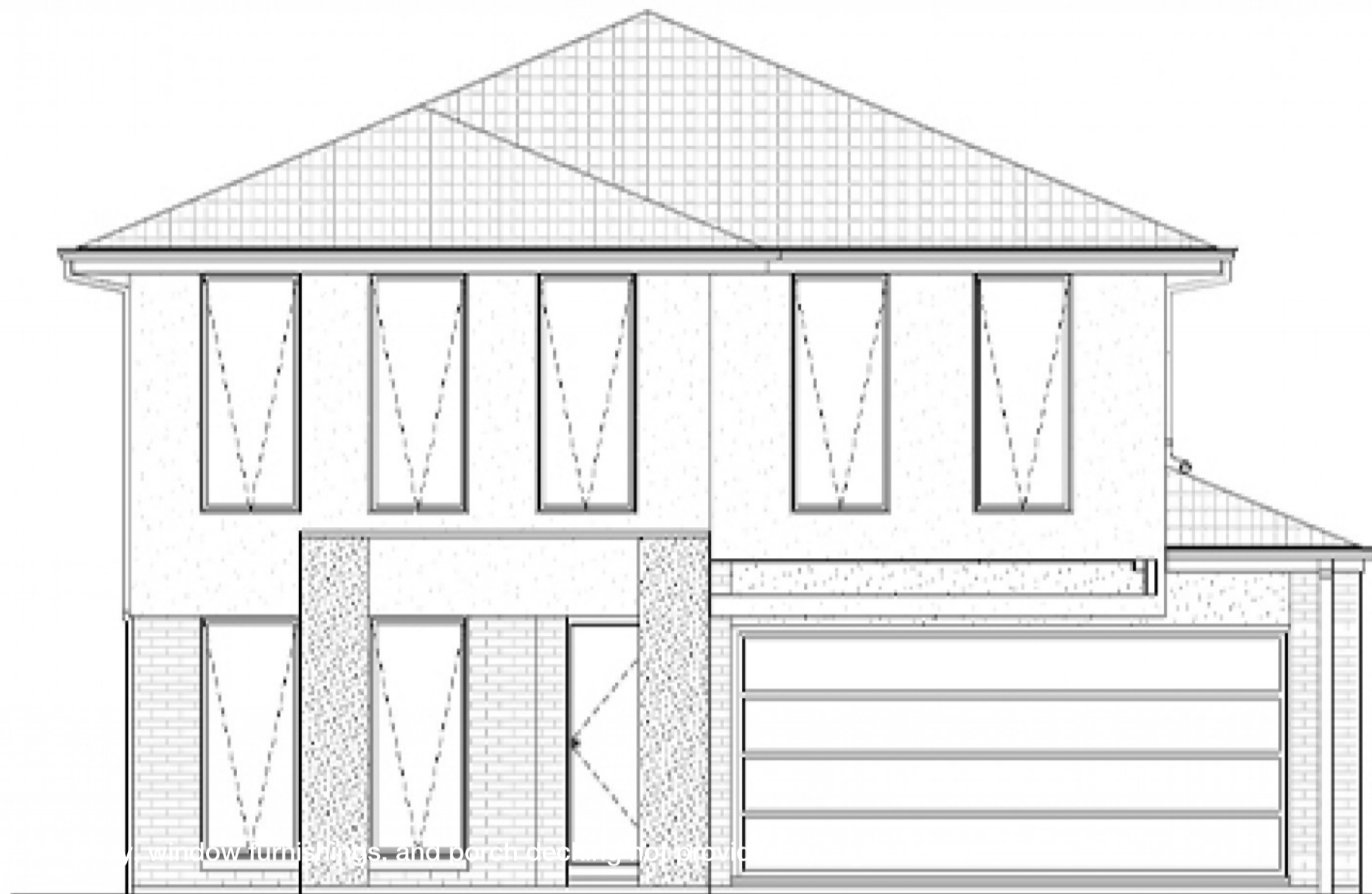


Price includes standard floorplan with S1 facade.



FIRST HOME BUYERS PRICE \$678,233 ^

**FIXED PRICE  
HOUSE & LAND**

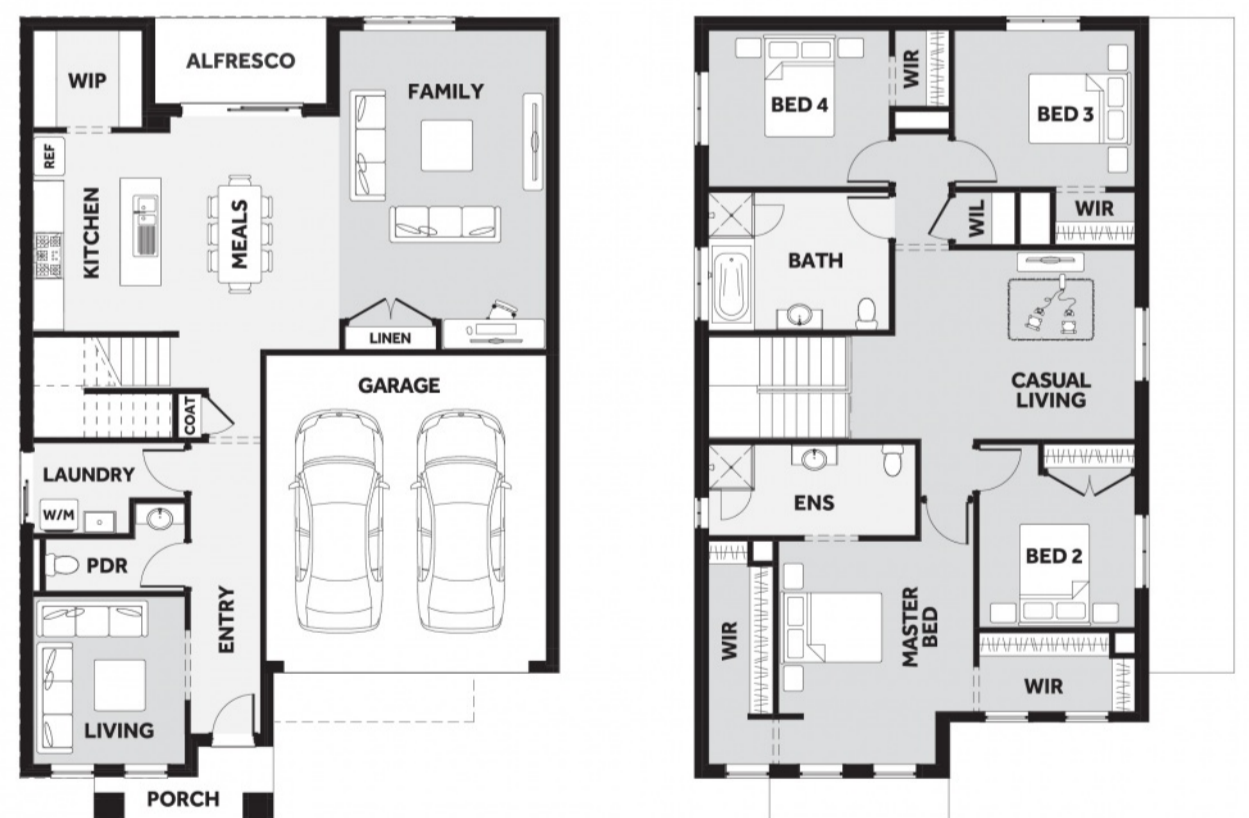
**Jardene 2-30**

Lot 321, Davis Circuit  
LAND SIZE: 263.00m<sup>2</sup>



**277.12m<sup>2</sup> | 29.83 sqs**

- ✓ Council and Developer Requirements
- ✓ 25 Year Structural Guarantee
- ✓ \$888 Initial Deposit for the home only
- ✓ Quantum Zero Benchtop & Overhead Cupboards to Kitchen
- ✓ 900mm Appliances & Dishwasher to Kitchen
- ✓ Tiled Shower Bases
- ✓ Choice of Tiles or Timber-look Laminate Flooring
- ✓ Double Glazed Windows ‡



Please Contact  
Eva Abenir  
0433 574 468  
Evaa@8homes.com.au

*We make it easy!*