

Price includes standard floorplan with S1 facade.



Furniture, feature lighting, landscaping, driveway, window furnishings, and porch decking not provided by Eight Homes.

FIRST HOME BUYERS PRICE \$675,790 ^

**FIXED PRICE
HOUSE & LAND**

VIVA1-13

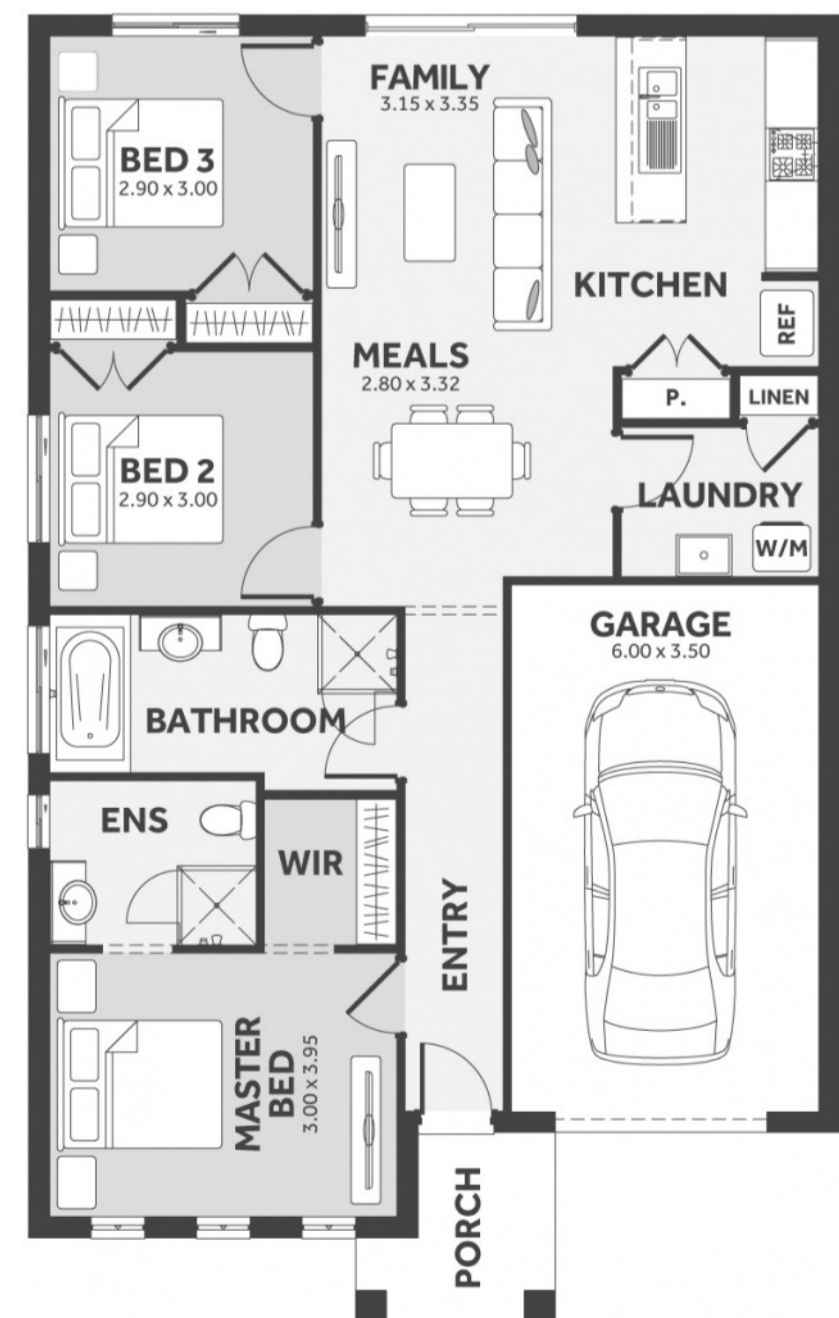
Lot 201, Claymore Street Sky 3977
LAND SIZE: 308.00m²

**WEDGE RD.
SKYE**

3 2.0 1

126.62m² | 13.63 sqs

- ✓ Council and Developer Requirements
- ✓ 25 Year Structural Guarantee
- ✓ \$888 Initial Deposit for the home only
- ✓ Quantum Zero Benchtop & Overhead Cupboards to Kitchen
- ✓ 900mm Appliances & Dishwasher to Kitchen
- ✓ Tiled Shower Bases
- ✓ Choice of Tiles or Timber-look Laminate Flooring
- ✓ Double Glazed Windows ‡



Please Contact
Paul Basol
0475 987 040
paul.basol@8homes.com.au

We make it easy!