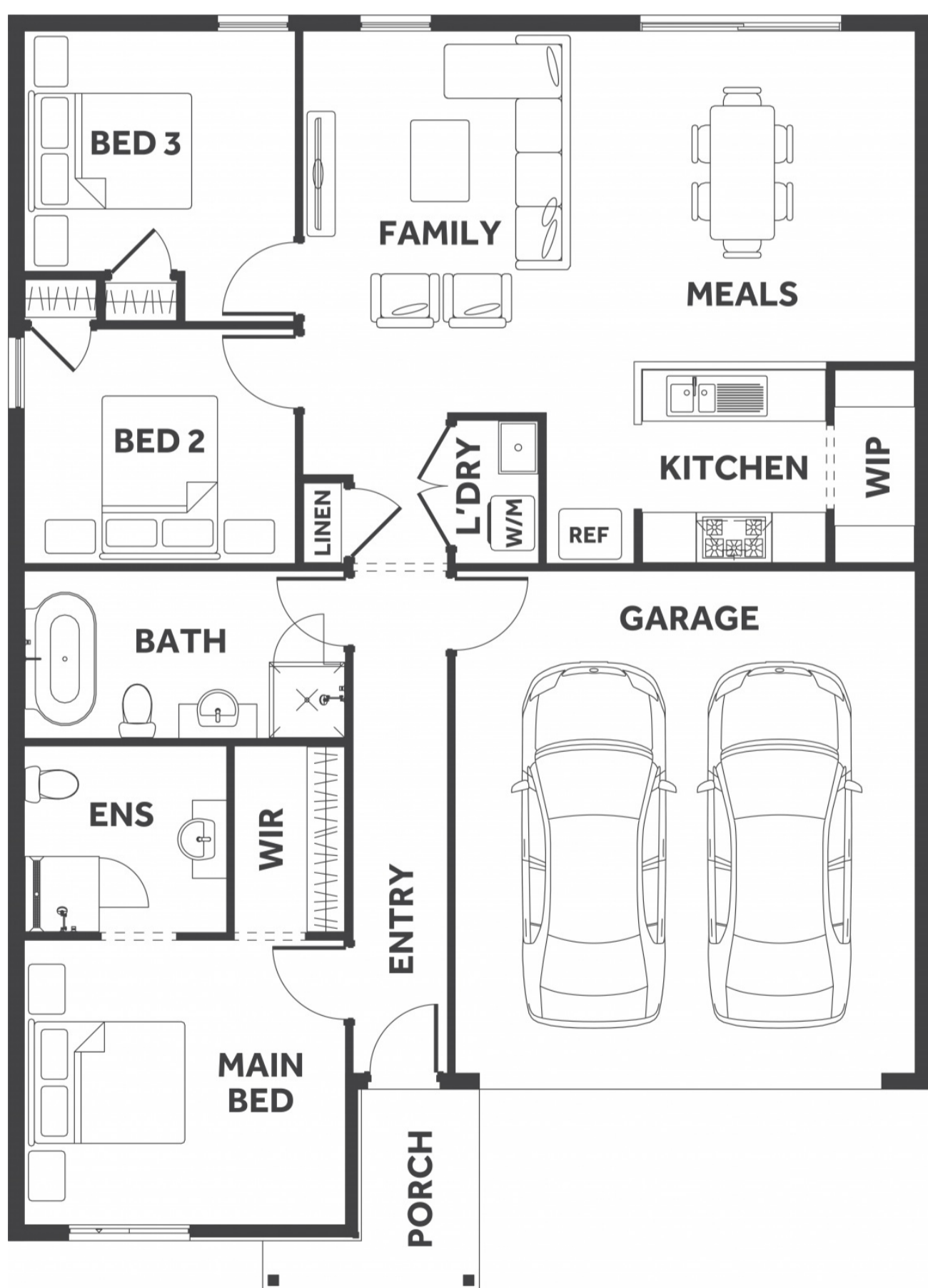


STOP PAYING **TOO MUCH**

eight
HOMES

merrifield



FIXED PRICE HOUSE & LAND

\$544,405*

FIRST HOME BUYERS PRICE **\$534,405[^]**

Price includes standard floorplan with h2 facade.

\$888 preliminary fee to secure the home price

a TWO

3 2 2

16.50 sqs | 153.28m²

Lot 711, Swilk Crescent

Land Size: **288m²**

INCLUSIONS

- 7 Star Energy rating compliant to the standard from and best house orientation[§]
- Double glazed windows[†]
- 4kw solar system (design specific)
- Fixed site costs and connections
- 900mm appliances
- Round Back to Wall Freestanding Bath
- Colorbond roof
- 25-year structural guarantee
- Council & developer requirements

Amelia Palamara
0412 719 427
amelia.palamara@8homes.com.au

*Price is based on the standard floorplan and façade shown. Eight homes reserve the right to change prices/promotions without notification. Subject to developer's design review panel final approval. Package price is based on builder's preferred siting. Images are for illustrative purposes and are to be used as a guide only. Eight Homes does not provide furniture décor, landscaping and decking. Please refer to the house and land inclusions and house specific working drawings for all details. [§]Speak to your Sales Consultant for further information on how your home best suits your block and how changes may impact your energy rating. [†]Double glazed windows apply to standard Eight Homes floorplans and facades. Changes/upgrades to floorplan, façade or windows (including size changes, additional windows) may incur an additional cost. [^]Available to first home buyers eligible for the state government First Homeowners Grant. For details visit www.sro.vic.gov.au Eight Homes DBU 1994