

# MODE4-28

**27.22** m+ lot width

width **14 m+** | depth **21 m+**



**Exterior Width: 11970 mm**  
**Exterior Length: 13870 mm**

## Dimensions

Living	200.74 m <sup>2</sup>	21.61 sqs
Garage	37.91 m <sup>2</sup>	4.08 sqs
Portch	5.62 m <sup>2</sup>	0.60 sqs
Alfresco	8.58 m <sup>2</sup>	0.92 sqs
Balcony	0.00 m <sup>2</sup>	0.00 sqs
Optional Alfresco	0.00 m <sup>2</sup>	0.00 sqs

**Total 252.87m<sup>2</sup> | 27.22 sqs**

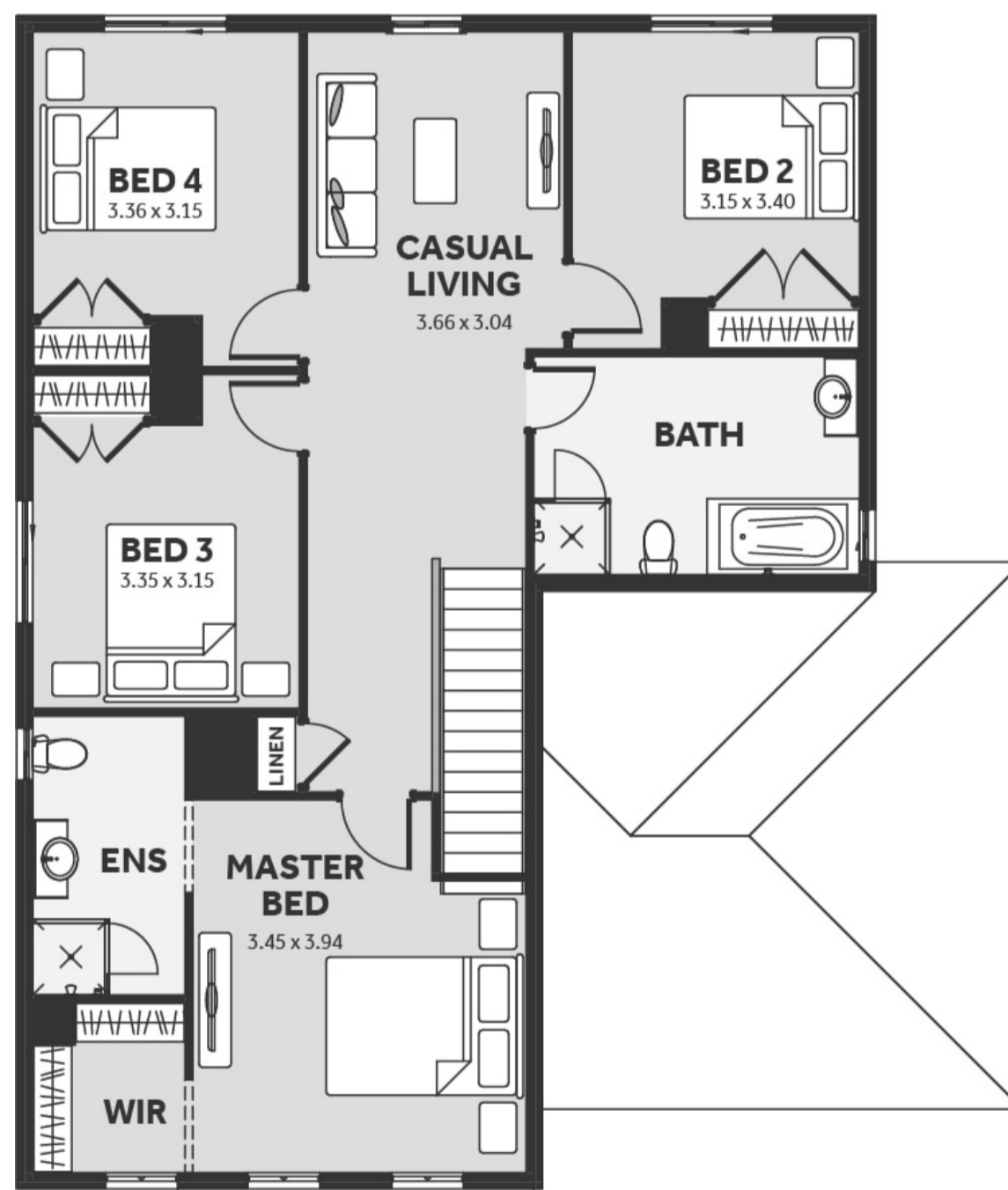
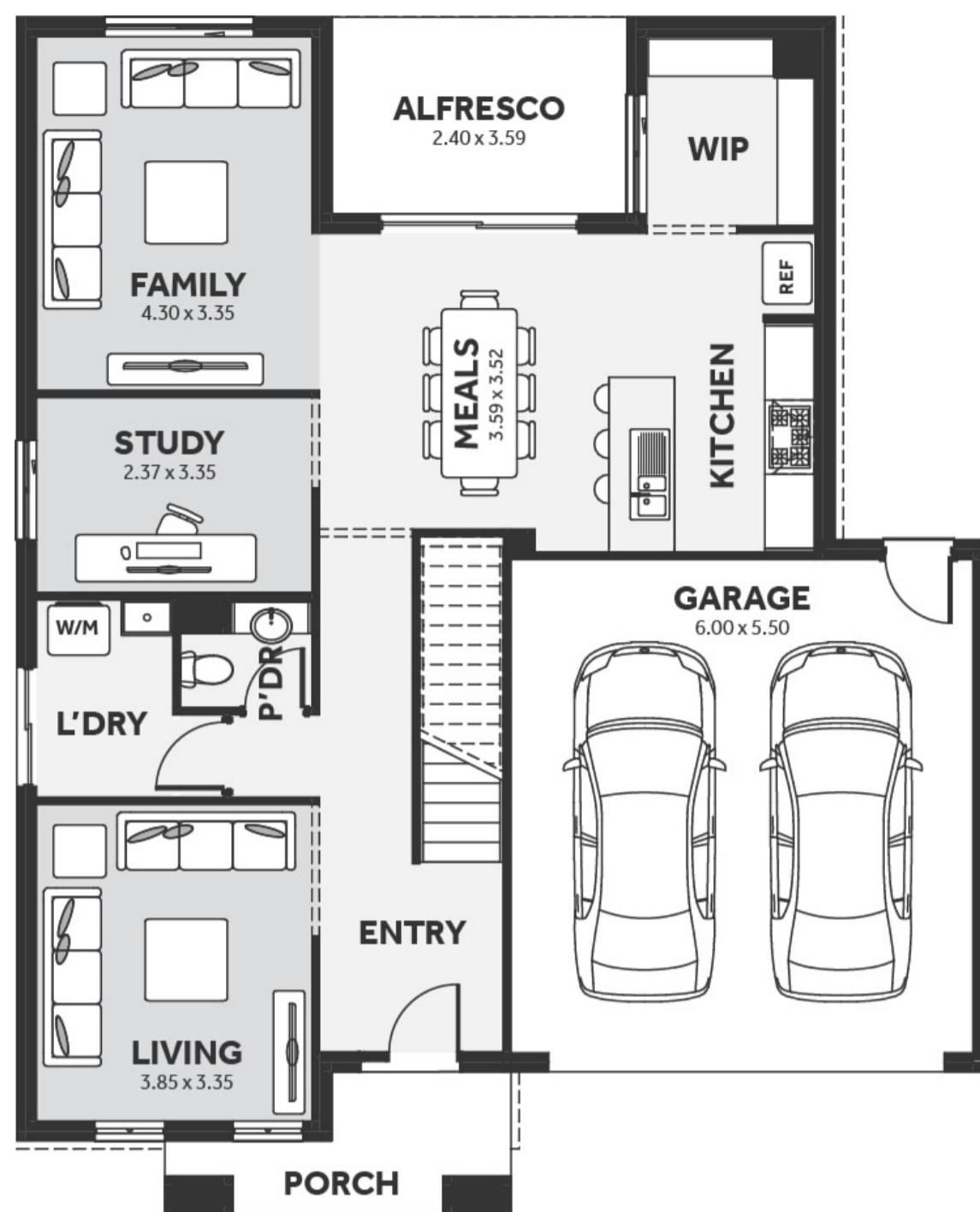
Floorplan images and measurements are to be used as a guide only. Please refer to specific working drawings for details.

For more information please visit:

[www.houseandlandworld.com](http://www.houseandlandworld.com)

or call:

**1300 HL WORLD**



**HOUSE & LAND** WORLD

**eight** HOMES