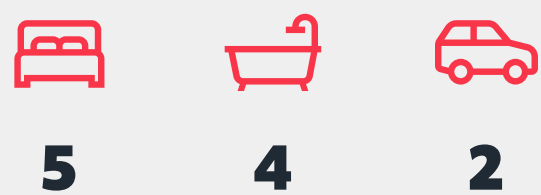


# d FIVE.3

**31.98** m+  
lot width

width **12.5 m+** | depth **25 m+**



**Exterior Width:** 10440 mm  
**Exterior Length:** 18650 mm

## Dimensions

Living	297.14 m <sup>2</sup>	26.17 sqs
Garage	37.10 m <sup>2</sup>	3.99 sqs
Portch	4.45 m <sup>2</sup>	0.48 sqs
Alfresco	12.45 m <sup>2</sup>	1.34 sqs
Balcony	0.00 m <sup>2</sup>	0.00 sqs
Optional Alfresco	0.00 m <sup>2</sup>	0.00 sqs

**Total 297.09m<sup>2</sup> | 31.98 sqs**

Floorplan images and measurements are to be used as a guide only. Please refer to specific working drawings for details.

For more information please visit:

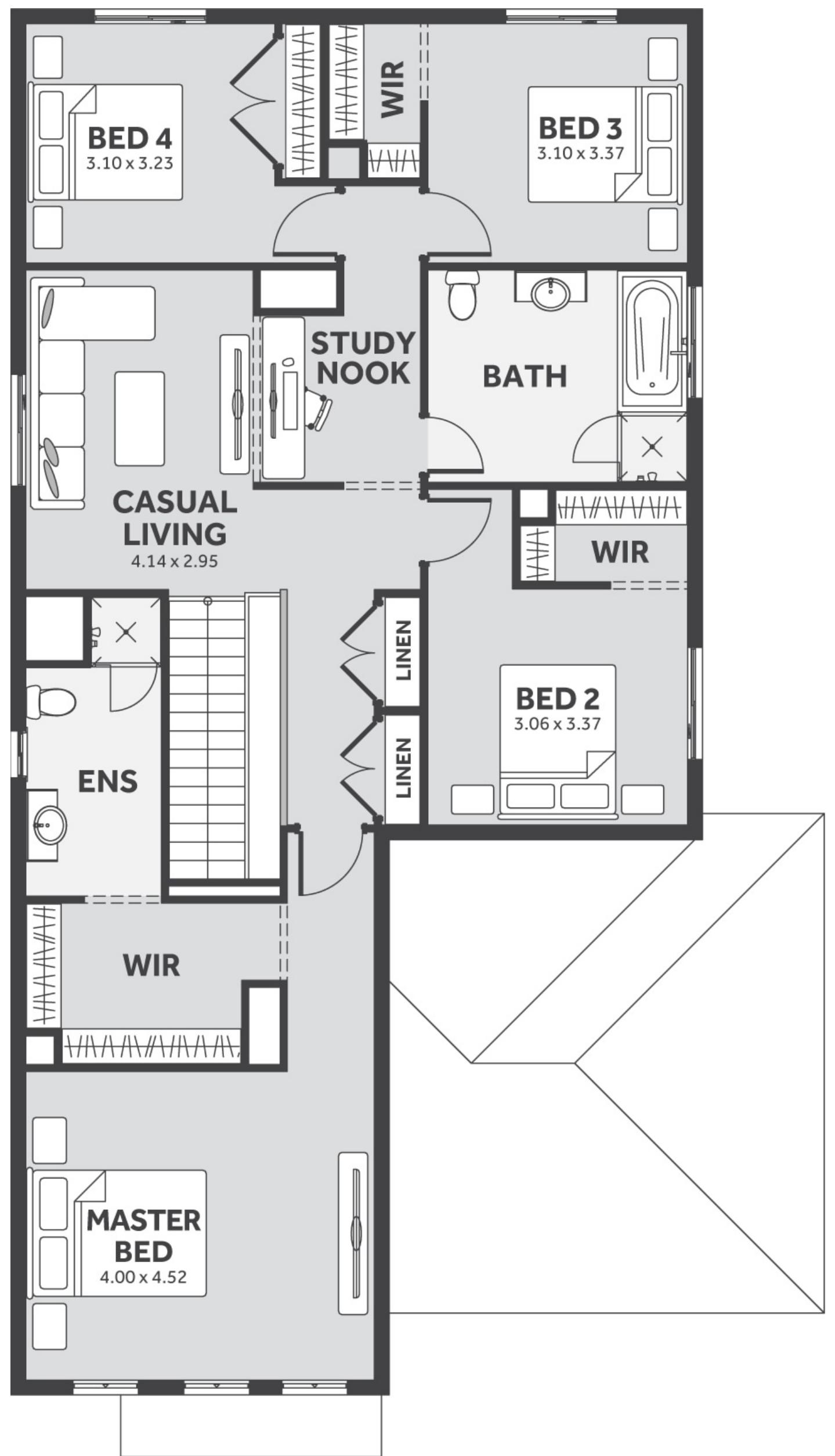
[www.houseandlandworld.com](http://www.houseandlandworld.com)

or call:

**1300 HL WORLD**



0



1